



Make It Yours.

MasterAir MA620M



The MasterAir MA620M comes with dual blacked out aluminum towers with a uniform 6 heat pipe layout to dissipate the heat evenly. The Masterfan SF120R provides high air pressure with silent performance to cool away the heat from the heat pipes in silence. Easy mounting system along with array of Addressable RGB LED lighting makes the MA620M the best option in the market for an air cooling solution

Features

Dual Tower Heatsink with a uniform 6 pipe –

A combination of two sets of heatsink covers more surface area and 6 heat pipes uniform layout distributes heat over more evenly across heatsinks

Lighting Badge – The Cooler Master hexagon logo and embedded Addressable RGB lighting strip provides unique perspective light effect. It is certified to sync with Motherboard RGB software or controlled by our controller.

Easy Mounting System– Exclusive All-In-One mounting design for easy installation

The new SF120R Fan – with silent driver IC and a wide range of speed settings, it can be used for silent operation or fine-tuned for maximum cooling performance

Addressable RGB LED Controller – the wired Addressable RGB LED Controller allows for customizable colors and effects with just the touch of a button.

EAN code	4719512090541
UPC code	884102062964
Net weight (Kg)	1.62
Gross weight (Kg)	1.9
Package dimension (L x W x H)	17.8 x 17.8 x 24.0 cm
Carton dimension (L x W x H)	55.0 x 37.1 x 26.5 cm

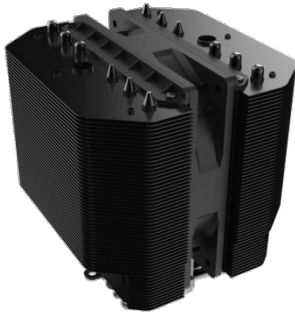
Cont.	W/ Pallet	Carton/ Pallet	W/O Pallet
20'	1848	28	N/A
40'	3696	28	N/A
40 HQ	4224	32	N/A

Specifications & Packing Information

Product Name		MasterAir MA620M
Product Number		MAM-D6PN-120PA-R1
CPU socket*		Intel® LGA 2066 / 2011-v3 / 2011 / 1151 / 1150 / 1155 / 1156 AMD AM4 / AM3+ / AM3 / AM2+ / AM2 / FM2+ / FM2 / FM1
Dimensions (L x W x H)		135 x 125 x 165 mm (5.3 x 4.9 x 6.5 inch)
Heat Sink Material		6 Heat Pipes / Aluminum Fins
Fan	Dimensions	120 x 120 x 25 mm (4.7 x 4.7 x 1 inch)
	Quantity	1 PCS
	Speed	650 ~ 2,000 RPM (PWM) ± 10%
	Air Flow	57.3 CFM (Max)
	Air Pressure	2.0 mmH ₂ O (Max)
	MTTF	160,000 Hours
	Noise Level	8 ~ 30 dBA
	Power Connector	4-Pin (PWM)
	Rated Voltage	12 VDC
	Rated Current	0.16 A
Safety Current	0.37 A	
Power Consumption	1.92 W	
Warranty		5 Years

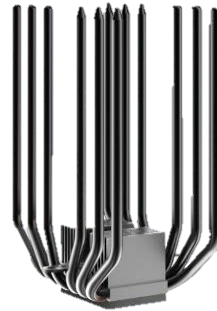
*For the latest CPU support information, please visit our website

Key Features



DUAL TOWER HEATSINK

A combination of 2 sets of heatsink allows bigger and more spread out surface area. The black paint enhances radiation cooling performance



6 HEATPIPE ARRAY

Enhanced thermal conductivity and uniform layout distributes heat over more evenly across heatsinks



LIGHTING BADGE

The Cooler Master hexagon logo and embedded Addressable RGB lighting strip provides unique perspective light effect



EASY MOUNTING SYSTEM

exclusive All-In-One mounting design for easy installation



The new SF120R Fan

with silent driver IC and a wide range of speed settings, it can be used for silent operation or fine-tuned for maximum cooling performance



Addressable RGB LED Controller

the wired Addressable RGB LED Controller allows for customizable colors and effects with just the touch of a button