



Make It Yours.

# SICKLEFLOW 120 BLUE

## MFX-B2DN-18NPB-R1

## FLOW TO PRESSURE



### Optimized Flow and Pressure

Continuing the SickleFlow 120 series , Cooler Master introduces a few new models with brand new upgraded design features for enhanced performance. Introducing RED LED lighting more vibrant and .

The new SickleFlow 120 fan blades were created with larger blades and increased curvature to optimize the air flow and air pressure performance. Strengthen structural frame design with added rib housing for durability. Improved dustproof and oil leakage prevention for beater life expectancy,

## FEATURES

**New Air Balance Blade** - Optimized fan blade design with increased curvature that improves air flow and air pressure.

**Improved Frame Durability** - Enhanced square frame structure with added rib-support for reducing turbulent flow, noise and increasing overall work efficiency.

**New Bearing Sealant** – Two-tier sealing mechanism designed to improve dustproof capabilities and prevent lubricant oil leakage for extended life span and performance.

**Luminescent Light Effect**– Using milky white tinted fan blades to enhance light dispersion for more vibrant and luminescent effect.

## SPECIFICATIONS

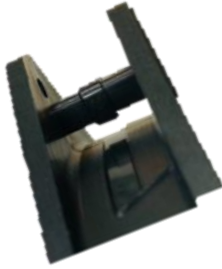
|                                   |                                 |
|-----------------------------------|---------------------------------|
| Product Name                      | SickleFlow 120 Blue             |
| Product Number                    | MFX-B2DN-18NPB-R1               |
| Profile                           | Blue LED                        |
| Bearing Type                      | Rifle                           |
| Fan Speed (RPM)                   | 650~1800 RPM ± 10%              |
| Airflow (CFM)                     | 62 CFM ± 10%                    |
| Air Pressure (mmH <sub>2</sub> O) | 2.5 mmH <sub>2</sub> O ± 10%    |
| Fan Noise Level (dBA)             | 8~27 dBA                        |
| Dimensions (mm)                   | 120 x 120 x 25 (4.7 x 4.7 x 1") |
| MTTF (hours)                      | 160,000                         |
| Rated Voltage                     | 12 VDC                          |
| Rated Current                     | 0.27 A                          |
| Safety Current                    | 0.37A                           |
| Power Consumption                 | 3.24 W                          |
| Connector                         | 4-Pin PWM                       |
| Weight                            | 156 g (0.34 lbs)                |
| Warranty                          | 2 Years                         |

## PACKING INFORMATION

|                               |                    |
|-------------------------------|--------------------|
| EAN code                      | 4719512097458      |
| UPC code                      | 884102069758       |
| Net weight                    | 0.168              |
| Gross weight                  | 0.236              |
| Package dimension (L x W X H) | 143 x 32 x 228 mm  |
| Carton dimension (L x W x H)  | 420 x 375 x 173 mm |
| Units/CTN                     | 20                 |

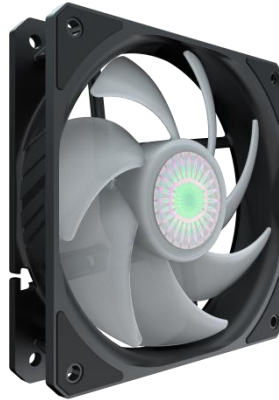
| Cont. | W/ Pallet | Carton/ Pallet | W/O Pallet |
|-------|-----------|----------------|------------|
| 20'   | 15840     | 72             | N/A        |
| 40'   | 31680     | 72             | N/A        |
| 40 HQ | 34320     | 78             | N/A        |

## FEATURES



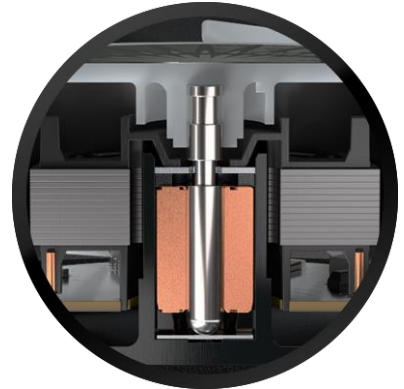
### Better Structural Support

New Flange housing design with added rib for better support, reduced vibration and



### New AB Fan Blades

Larger and more curved fan blades for optimized air flow and air pressure.



### Two-Tier Sealing Mechanism

Improve dustproof properties as well as prevent sleeve lubricant from leaking.



### Vibrant LED Color

Using light-guiding material to display even and bright color