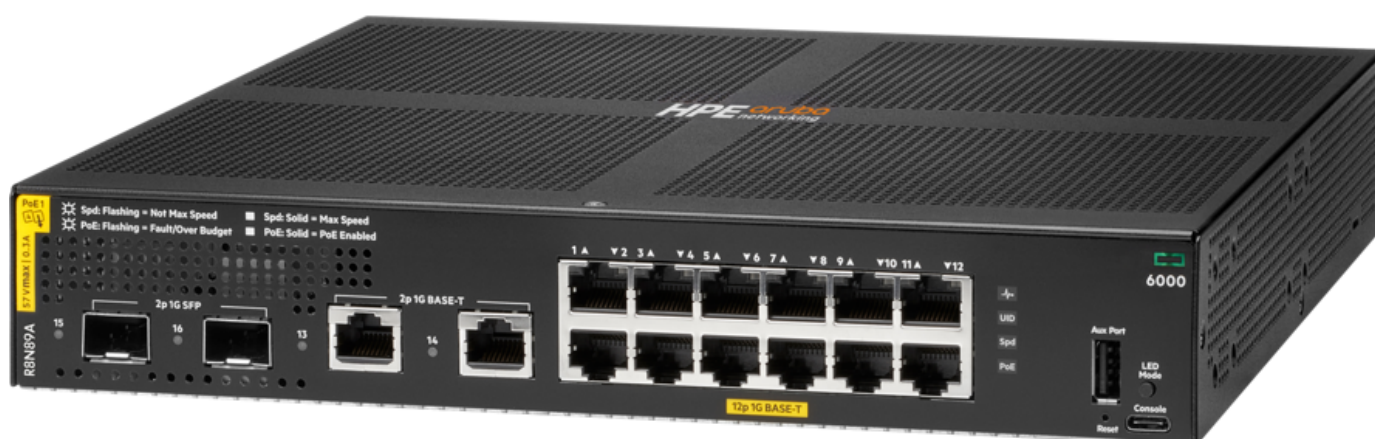


HPE Aruba Networking CX 6000 Switch Series

HPE Aruba Networking CX 6000 12G Class4 PoE 2G/2SFP 139W Switch (R8N89A)



What's new

- It simplifies IT operations with modern Layer 2 switch series that provides entry level, reliable, and convenient wired access connectivity
- The CX 6000 series has convenient built-in 1GbE uplinks and up to 740W of Class 4 PoE for support of access points, client, and IoT devices
- It has compact and fanless 8-port and 12-port models for space-constrained deployments
- The CX 6000 provides flexibility to manage and simplify configurations with HPE Aruba Networking Central, HPE Aruba Networking Switch Multi-Edit Software, easy to use Web GUI, or industry standard CLI
- Ready for software defined

Overview

The HPE Aruba Networking CX 6000 Switch Series is a modern family of entry level access switches ideal for branch offices, midsize businesses, and small enterprises. Designed for reliable, simple, and secure access, this switch family provides a convenient and cost-effective wired access solution for networks supporting Internet of Things (IoT), mobile, and cloud applications.

Prepare your network for future demands with a powerful ASIC and HPE Aruba Networking CX Switch Operating System for a consistent, and efficient operator experience. This fully-managed series has convenient built-in uplinks with up to 740W of Class 4 PoE to support IoT devices such as security cameras and wireless APs. A compact and fanless model is ideal for use in quiet, small workspaces. The CX 6000 series is easy to deploy and use with flexible management choices, allowing the ideal fit for your business and network environment.

Features

Entry-level Layer 2 access switches

The HPE Aruba Networking CX 6000 Switch Series offers Ethernet gigabit connectivity and optional PoE to provide entry-level, reliable, and convenient wired access connectivity for enterprise branch offices and SMB networks.

The switch series delivers a simple, consistent operator experience with the HPE Aruba Networking CX Switch Operating System used across HPE Aruba Networking CX switching platforms.

It has fully-managed enterprise-class switches deliver Layer 2 capabilities with support static routing, access control lists (ACLs), robust quality of service (QoS), traffic prioritization, sFlow®, and IPv6.

The CX 6000 series provides right-size deployment with choice of 8, 12, 24, and 48-port 1U models with convenient built-in 1GbE uplinks and up to 740W of Class 4 PoE.

It simplifies ownership with no switch software licensing or subscriptions required.

AI-ready performance and power

The HPE Aruba Networking CX 6000 Switch Series is designed with a dedicated ASIC that delivers very low latency, increased packet buffering, and optimized power consumption ideal for AI, Wi-Fi 7, and IoT requirements.

It supports up to 740W IEEE 802.3at Class 4 PoE with up to 30W per port to enable full deployments of wireless access points and IoT devices.

It has up to four built-in wire speed 1GbE uplinks remove bottlenecks at the access layer where users and devices connect.

Simplified configuration and management

The HPE Aruba Networking CX 6000 Switch Series provides flexibility to manage and simplify configurations with HPE Aruba Networking Central, HPE Aruba Networking Switch Multi-Edit Software, easy-to-use web GUI, or industry-standard CLI.

HPE Aruba Networking Switch Multi-Edit Software introduces automation that allows for rapid network-wide changes and verifies policy conformance post network updates.

The switch series offers unified management across wired, wireless, and WAN using HPE Aruba Networking Central.

It reduces manual IT operation tasks around initial deployment or on-going configuration changes to accommodate adds, moves, and changes with colorless ports using local user roles and local MAC authentication (LMA).

The CX 6000 series is ready for software-defined networking with REST APIs for fine-grained programmability of network tasks.

Technical specifications	HPE Aruba Networking CX 6000 12G Class4 PoE 2G/2SFP 139W Switch
Product Number	R8N89A
Differentiator	Class 4 PoE/PoE+
Power consumption	Max. Power (w/o PoE): 21.9W Max. Power (w/ PoE): 170W
Input voltage	100–127 VAC / 200–240 VAC
Ports	12 x 10/100/1000BASE-T ports 2 x 1 G SFP ports 2 x 1 GbE ports Supports PoE Standards IEEE 802.3af, 802.3at 1 x USB-C console port 1 x USB Type-A host port
Latency	1 Gbps: 2.3 µSec
Switching capacity	32 Gbps
Throughput	23.8 Mpps
Memory and processor	CPU: Dual-core Arm® Cortex-A9 @ 1016 MHz Memory: 4 GB DDR3 Flash: 16 GB eMMC
PoE capability	139W Class 4 PoE/PoE+
Management features	Management flexibility with support for HPE Aruba Networking Central, easy-to-use Web GUI, CLI, and HPE Aruba Networking Switch Multi-Edit Software
Operating temperature	Maximum of 32°F to 113°F (0°C to 45°C) up to 5000 ft (1.5 km) derate -1°C for every 1000 ft (305 m) from 5000 ft (1.5 km) to 10000 ft (3.0 km)
Weight	2.8 kg
Product dimensions	4.4 x 25.4 x 25.5 cm
Warranty	Limited lifetime warranty. See the warranty duration.

HPE Aruba Networking Services

HPE Aruba Networking services simplify and accelerate the network technology lifecycle, enabling your network to scale with better predictability and cost-effectiveness. Whether you operate your own network and need to improve your IT efficiencies, or you want to offload some of the burden, we have the services you need to reach your goals.

Learn more about what HPE Services - Aruba Networking has to offer at: hpe.com/edge/services

Support Services

Our support portfolio provides the essential support elements as well as proactive and preventive features to help you improve your team's productivity and get the most from your network. Our support customers benefit from faster issue resolution, simplified operations and efficiencies, and reduced network issues.

Professional Services

With deep intellectual capital and purpose-built tools, our team delivers a range of standard and custom professional services designed to accelerate your value from HPE Aruba Networking technology.

Project based services include:

- Planning, audit, and assessment
- Architecture review and design
- Deployment, migration, and knowledge transfer

Annual subscription services include:

- Network optimization
- Intelligent Operations
- Customer Experience Management

Our [Education Services](#) allow your team to come up to speed quickly.

HPE GreenLake for Networking

Our NaaS solution, is part of the HPE GreenLake services family, and simplifies network operations, accelerates equipment handling, and increases the value of your HPE Aruba Networking solution. If you need expert guidance and automation-based operations for your team, please explore our NaaS approach through HPE GreenLake for Networking.

[For additional technical information,
available models and options, please
reference the QuickSpecs](#)

Visit [HPE.com](#)

[Chat now](#)

© Copyright 2026 Hewlett Packard Enterprise Development LP. The information contained herein is subject to change without notice. The only warranties for Hewlett Packard Enterprise products and services are set forth in the express warranty statements accompanying such products and services. Nothing herein should be construed as constituting an additional warranty. Hewlett Packard Enterprise shall not be liable for technical or editorial errors or omissions contained herein.

Parts and Materials: HPE will provide HPE-supported replacement parts and materials required to maintain the covered hardware.

Parts and components that have reached their maximum supported lifetime and/or the maximum usage limitations as set forth in the manufacturer's operating manual, product quick-specs, or the technical product data sheet will not be provided, repaired, or replaced as part of these services.

Arm is a registered trademark of Arm Limited. sFlow is a registered trademark of InMon Corp. All third-party marks are property of their respective owners.

Image may differ from the actual product.

[PSN1014132928AUEN](#), January 05, 2026.

HEWLETT PACKARD ENTERPRISE

[hpe.com](#)

